



# The ID.4

Effective from 01.11.2025





# The ID.4

## Electric

### Private Buyers

Model Description <sup>1</sup>	Battery Size kWh <sup>2</sup>	Fuel Type /	Annual Motor Tax	Output HP**	Range km (WLTP Combined) <sup>3</sup>	Power	Combined CO <sub>2</sub> (WLTP) <sup>3</sup>	RRP Before State Subsidies <sup>4</sup>	RRP After State Subsidies <sup>4</sup>	Delivery & Service <sup>5</sup>	ROTR <sup>6</sup>
<b>52kWh Battery: 360km - 361km WLTP Range</b>											
ID.4 PURE	52	Electric / 2WD Auto	A €120	170	361	16.5	0	€40,990	<b>€34,850</b>	€1,485	€36,335
ID.4 PURE PLUS	52	Electric / 2WD Auto	A €120	170	360	16.6	0	€41,990	€35,670	€1,485	€37,155
<b>77kWh Battery: 520km - 553km WLTP Range</b>											
ID.4 PRO	77	Electric / 2WD Auto	A €120	286	553	15.8	0	€45,990	€39,530	€1,485	€41,015
ID.4 PRO PLUS	77	Electric / 2WD Auto	A €120	286	547	16.0	0	€48,990	€44,005	€1,485	€45,490
ID.4 PRO STYLE	77	Electric / 2WD Auto	A €120	286	540	16.3	0	€50,990	€46,965	€1,485	€48,450
ID.4 GTX	77	Electric / 4WD Auto	A €120	340	526	16.6	0	€54,990	€51,490	€1,485	€52,975
ID.4 GTX PLUS	77	Electric / 4WD Auto	A €120	340	520	16.8	0	€56,990	€53,490	€1,485	€54,975



\*\*Maximum power determined in accordance with UN-GTR.21. The maximum power is available at the highest possible battery state of charge and with an optimal operating temperature range of the high voltage battery.

<sup>1</sup>This vehicle is a WLTP (Worldwide Harmonised Light-Duty Vehicles Test Procedure) type approved vehicle. More information is available at [www.volkswagen.ie/wltp](http://www.volkswagen.ie/wltp).

<sup>2</sup>Net to energy amount.

<sup>3</sup>The specified fuel consumption and emission values are the official figures obtained from tests under standardised EU test conditions in accordance with the Worldwide Harmonized Light Vehicles Test Procedure (WLTP), a more realistic test method for measuring fuel consumption (kWh/100km) and CO<sub>2</sub> emissions and are correct at the time of print. The above values reflect the standard vehicle excluding additional equipment such as optional extras and accessories which may have an effect on the fuel consumption (kWh/100km) and achievable range. WLTP range values for standard vehicles may vary depending on equipment. In practice, the actual range varies depending on driving style, speed, use of convenience/auxiliary equipment, outside temperature, number of passengers/additional load, and topography. To discover exact values please configure your desired vehicle at [volkswagen.ie/build](http://volkswagen.ie/build). You can discover more about the WLTP at [volkswagen.ie/wltp](http://volkswagen.ie/wltp).

<sup>4</sup>State subsidies refer to VRT relief and SEAI Grant for Private Customers, Business/Commercial Buyer State subsidy comprises of VRT relief, all of which are subject to approval. SEAI Grant is not applicable on vehicles with a list price of over €60,000.

<sup>5</sup>All prices (Retail, Delivery and ROTR) are recommended by Volkswagen Ireland and are inclusive of VAT. €1,485 includes optional 'S Pack' ID. Service Plan which can be removed upon request. Maximum delivery charge with Service Plan removed is €1,095. 'S Pack' ID. Service Plan includes one service, with pollen filter and brake fluid replacement.

<sup>6</sup>Recommended 'On the Road' Retail price.

VRT Bands and rate of Annual Motor Tax are valid as of 1st January 2022 and calculated from the base model WLTP values for model year 2026 cars produced from CW36/2025 onwards. All vehicles with TBC are subject to EU type approval and with that were not available at time of going to print.

Volkswagen IE may change RRP's at any time (this includes where there are changes in government regulation and/or legislation). There may be a delay to any RRP displaying correctly on our materials. Always obtain prices from your chosen authorised Volkswagen retailer.

In accordance with (EU) 2020/740 ("Tire Labeling Regulation"), please visit [volkswagen.ie](http://volkswagen.ie) configurator for details relating to the tyres applicable to said vehicles.

Please note every effort has been made to ensure the contents of this publication (including RRP, CO<sub>2</sub>, fuel consumption and technical information) were accurate and up-to-date at the time of going to print 3rd of October 2024. Volkswagen Ireland reserves the right to change specification, prices and withdraw products from sale without notice. Any such alternations will be notified to Volkswagen Retailers at the earliest opportunity. Please consult your local Authorised Volkswagen retailer for the latest product information.

3 Years Tyre Insurance covers tyres that are damaged by an Insured Event. Exclusions do apply. For more information on general terms and conditions, please click here (<https://www.volkswagen.ie/en/owners-and-users/wheels-and-tyres.html>)

The ID.4 from production wk 47/2023 supports ID software 4.0 and subsequent updates that follow.

Effective from 1st of November 2025, for production from CW20/2025 onwards. All prices include VAT and VRT. Prices and specifications are subject to change without notice.

# The ID.4

## Electric

### Business / Commercial Buyers

Model Description <sup>1</sup>	Battery Size kWh <sup>2</sup>	Fuel Type /	Annual Motor Tax	Output HP**	Range km (WLTP Combined) <sup>3</sup>	Power	Combined CO <sub>2</sub> (WLTP) <sup>3</sup>	RRP Before State Subsidies <sup>4</sup>	RRP After State Subsidies <sup>4</sup>	Delivery & Service <sup>5</sup>	ROTR <sup>6</sup>
<b>52kWh Battery: 360km - 361km WLTP Range</b>											
ID.4 PURE	52	Electric / 2WD Auto	A €120	170	361	16.5	0	€40,990	€38,350	€1,485	€39,835
ID.4 PURE PLUS	52	Electric / 2WD Auto	A €120	170	360	16.6	0	€41,990	€39,169	€1,485	€40,653
<b>77kWh Battery: 520km - 553km WLTP Range</b>											
ID.4 PRO	77	Electric / 2WD Auto	A €120	286	553	15.8	0	€45,990	€43,030	€1,485	€44,513
ID.4 PRO PLUS	77	Electric / 2WD Auto	A €120	286	547	16.0	0	€48,990	€47,505	€1,485	€48,990
ID.4 PRO STYLE	77	Electric / 2WD Auto	A €120	286	540	16.3	0	€50,990	€50,465	€1,485	€51,950
ID.4 GTX	77	Electric / 4WD Auto	A €120	340	526	16.6	0	€54,990	€54,990	€1,485	€56,475
ID.4 GTX PLUS	77	Electric / 4WD Auto	A €120	340	520	16.8	0	€56,990	€56,990	€1,485	€58,475



\*\*Maximum power determined in accordance with UN-GTR.21. The maximum power is available at the highest possible battery state of charge and with an optimal operating temperature range of the high voltage battery.

<sup>1</sup>This vehicle is a WLTP (Worldwide Harmonised Light-Duty Vehicles Test Procedure) type approved vehicle. More information is available at [www.volkswagen.ie/wltp](http://www.volkswagen.ie/wltp).

<sup>2</sup>Net to energy amount.

<sup>3</sup>The specified fuel consumption and emission values are the official figures obtained from tests under standardised EU test conditions in accordance with the Worldwide Harmonized Light Vehicles Test Procedure (WLTP), a more realistic test method for measuring fuel consumption (kWh/100km) and CO<sub>2</sub> emissions and are correct at the time of print. The above values reflect the standard vehicle excluding additional equipment such as optional extras and accessories which may have an effect on the fuel consumption (kWh/100km) and achievable range. WLTP range values for standard vehicles may vary depending on equipment. In practice, the actual range varies depending on driving style, speed, use of convenience/auxiliary equipment, outside temperature, number of passengers/additional load, and topography. To discover exact values please configure your desired vehicle at [volkswagen.ie/build](http://volkswagen.ie/build). You can discover more about the WLTP at [volkswagen.ie/wltp](http://volkswagen.ie/wltp).

<sup>4</sup>State subsidies refer to VRT relief and SEAI Grant for Private Customers, Business/Commercial Buyer State subsidy comprises of VRT relief, all of which are subject to approval. SEAI Grant is not applicable on vehicles with a list price of over €60,000.

<sup>5</sup>All prices (Retail, Delivery and ROTR) are recommended by Volkswagen Ireland and are inclusive of VAT. €1,485 includes optional 'S Pack' ID. Service Plan which can be removed upon request. Maximum delivery charge with Service Plan removed is €1,095. 'S Pack' ID. Service Plan includes one service, with pollen filter and brake fluid replacement.

<sup>6</sup>Recommended 'On the Road' Retail price.

VRT Bands and rate of Annual Motor Tax are valid as of 1st January 2022 and calculated from the base model WLTP values for model year 2026 cars produced from CW36/2025 onwards. All vehicles with TBC are subject to EU type approval and with that were not available at time of going to print.

Volkswagen IE may change RRP's at any time (this includes where there are changes in government regulation and/or legislation). There may be a delay to any RRP displaying correctly on our materials. Always obtain prices from your chosen authorised Volkswagen retailer.

In accordance with (EU) 2020/740 ("Tire Labeling Regulation"), please visit [volkswagen.ie](http://volkswagen.ie) configurator for details relating to the tyres applicable to said vehicles.

Please note every effort has been made to ensure the contents of this publication (including RRP, CO<sub>2</sub>, fuel consumption and technical information) were accurate and up-to-date at the time of going to print 3rd of October 2024. Volkswagen Ireland reserves the right to change specification, prices and withdraw products from sale without notice. Any such alternations will be notified to Volkswagen Retailers at the earliest opportunity. Please consult your local Authorised Volkswagen retailer for the latest product information.

3 Years Tyre Insurance covers tyres that are damaged by an Insured Event. Exclusions do apply. For more information on general terms and conditions, please click here (<https://www.volkswagen.ie/en/owners-and-users/wheels-and-tyres.html>)

The ID.4 from production wk 47/2023 supports ID software 4.0 and subsequent updates that follow.

Effective from 1st of November 2025, for production from CW36/2025 onwards. All prices include VAT and VRT. Prices and specifications are subject to change without notice.

# ID.4 PURE

52kWh Battery  
361km Range

## Exterior Equipment

- » 18" Steel Wheels
- » Standard wheel bolts
- » Tires 235/60 R18
- » LED headlamps with automatic headlight control
- » LED rear combination lamps
- » Exterior mirrors power-adjustable, folding and heated
- » Black roof rails
- » Rear window wiper with intermittent control
- » Green heat-insulating glass windows on sides and in rear
- » Body-colored bumpers

## Interior Equipment

- » Driver seat with height adjustment
- » Armrest for front seats
- » Pedals in stainless steel, with play and pause symbols
- » Door and side trim panel in foam film insert in leatherette
- » Auto-dimming interior rearview mirror
- » Safety-optimized front head restraints
- » 3 head restraints in rear
- » 6+1 speakers
- » Illuminated vanity mirrors in sun visors

## Charging Equipment

- » Charging cable Mode 3 Type 2, 32 A
- » 50-kW maximum DC charging power
- » 8 year battery warranty or 160,000km,

## Comfort Package

- » Air Care Climatronic 2 zone automatic climate control with enhanced air filter and stationary air conditioning
- » 2 additional USB-C charging sockets on the center console in rear, charging capacity up to 45 W
- » Variable center console, with exchangeable inserts for beverage holder and storage compartments
- » Heated front seats
- » Laminated safety glass windshield, heated, infrared-reflecting windshield, sound-insulating

## Functional Equipment

- » 12.9" Infotainment Display
- » App-Connect Wireless for Apple CarPlay and Android Auto
- » Voice control
- » Digital radio reception DAB+
- » Diversity antenna for FM reception
- » 12-V outlet in luggage compartment
- » Driving Mode Selection
- » Park Distance Control - warning signals for obstacles in the front and rear
- » 2 USB-C ports in the front, charging capacity up to 45 W
- » Adaptive cruise control
- » Predictive speed limiter
- » Instrument cluster with electronic speedometer, odometer and trip odometer, tachometer
- » Dynamic Road Sign Display
- » Electromechanical speed-sensitive power steering
- » Preparation. for VW Connect (subscription service)
- » Rain sensor
- » Mobile phone interface
- » Electric auxiliary air heater

## Infotainment Package

- » Navigation system "Discover Pro"
- » Mobile phone interface "Comfort" with inductive charging feature

## Assistance Package

- » Rear view camera system
- » Illuminated door handle recesses
- » Keyless locking and starting system Keyless Access with SAFELOCK
- » Anti-theft alarm system with interior monitoring, backup horn, and towing protection
- » Proactive passenger protection system in combination with Front Assist
- » Park Assist Plus with Park Distance Control

## Safety

- » Driver and front passenger airbag with front passenger airbag deactivation
- » Curtain airbags in front and rear, side airbags in front, center airbag
- » Preparation for alcohol interlock
- » Follow-on warranty, contract duration: 1 year, subsequent to manufacturer warranty, max. total mileage: 90 000 km
- » Auto. Emergency Braking Front Assist with Pedestrian and Cyclist Monitoring
- » Tool kit and Tire Mobility Set: 12-volt compressor and tire sealant
- » UN ECE Compliant
- » Electronic immobilizer
- » Advanced driver attention & drowsiness monitor
- » Tire Pressure Monitoring System
- » 3-point seat belts in front with height adjustment and seat belt pretensioners
- » Warning signal and warning light for front and rear seat belts not fastened
- » Emergency call service
- » Single-tone horn
- » Lane keeping system 'Lane Assist'
- » Lane change system 'Side Assist'
- » Rear Traffic Alert
- » Blind spot monitor - exterior mirrors
- » First aid kit, warning triangle and safety vest
- » ISOFIX anchors for child seats on outer rear bench seats and on front passenger seat, compatible for i-Size

## Interior Package

- » Inserts of front seats and outer rear seats in ArtVelours microfleece
- » 30-color ambient lighting
- » Multi-function steering wheel, heated, with touch control
- » Front seats with height adjustment
- » Asymmetric split folding rear seat backrest, with load-through hatch and center armrest, 2 beverage holders
- » Comfort dashboard



The above specifications are for information purposes only as our products are continually updated and changes may be made to the specifications at any time. If you require any specific feature, you must consult your local dealer who is regularly updated with any change in specification. Specifications are subject to change without notice.



# ID.4 PURE PLUS

In addition to ID.4 PURE

52kWh Battery  
360km Range

## Metallic Paint

- » As Standard\*

## Alloy Wheel Package

- » 18" 'FALUN' alloy wheels - 8J x 18,
- » Wheel locks with extended theft protection

## Additional Standard Items

- » Rear Tinted Windows
- » Floor Mats
- » Maximum DC charging power



The above specifications are for information purposes only as our products are continually updated and changes may be made to the specifications at any time. If you require any specific feature, you must consult your local dealer who is regularly updated with any change in specification. Specifications are subject to change without notice.

# ID.4 PRO

77kWh Battery  
553km Range

## Exterior Equipment

- » 19" Steel Wheels
- » Standard wheel bolts
- » Tires 235/55 R19 in front, tires 255/50 R19 in rear
- » LED headlamps with automatic headlight control
- » LED rear combination lamps
- » Exterior mirrors power-adjustable, folding and heated
- » Black roof rails
- » Rear window wiper with intermittent control
- » Green heat-insulating glass windows on sides and in rear
- » Body-colored bumpers

## Interior Equipment

- » Driver seat with height adjustment
- » Armrest for front seats
- » Pedals in stainless steel, with play and pause symbols
- » Door and side trim panel in foam film insert in leatherette
- » Auto-dimming interior rearview mirror
- » Safety-optimized front head restraints
- » 3 head restraints in rear
- » 6+1 speakers
- » Illuminated vanity mirrors in sun visors

## Interior Package

- » Inserts of front seats and outer rear seats in ArtVelours microfleece
- » 30-color ambient lighting
- » Multi-function steering wheel, heated, with touch control
- » Front seats with height adjustment
- » Asymmetric split folding rear seat backrest, with load-through hatch and center armrest, 2 beverage holders
- » Comfort dashboard

## Infotainment Package

- » Navigation system "Discover Pro"
- » Mobile phone interface "Comfort" with inductive charging feature

## Charging Equipment

- » Charging cable Mode 3 Type 2, 32 A
- » Maximum DC charging power
- » 8 year battery warranty or 160,000km,

## Functional Equipment

- » 12.9" Infotainment Display
- » App-Connect Wireless for Apple CarPlay and Android Auto
- » Voice control
- » Digital radio reception DAB+
- » Diversity antenna for FM reception
- » 12-V outlet in luggage compartment
- » Driving Mode Selection
- » Park Distance Control - warning signals for obstacles in the front and rear
- » 2 USB-C ports in the front, charging capacity up to 45 W
- » Adaptive cruise control
- » Predictive speed limiter
- » Instrument cluster with electronic speedometer, odometer and trip odometer, tachometer
- » Dynamic Road Sign Display
- » Electromechanical speed-sensitive power steering
- » Preparation. for VW Connect (subscription service)
- » Rain sensor
- » Mobile phone interface
- » Electric auxiliary air heater

## Assistance Package

- » Rear view camera system
- » Illuminated door handle recesses
- » Keyless locking and starting system Keyless Access with SAFELOCK
- » Anti-theft alarm system with interior monitoring, backup horn, and towing protection
- » Proactive passenger protection system in combination with Front Assist
- » Park Assist Plus with Park Distance Control

## Safety

- » Driver and front passenger airbag with front passenger airbag deactivation
- » Curtain airbags in front and rear, side airbags in front, center airbag
- » Preparation for alcohol interlock
- » Follow-on warranty, contract duration: 1 year, subsequent to manufacturer warranty, max. total mileage: 90 000 km
- » Auto. Emergency Braking Front Assist with Pedestrian and Cyclist Monitoring
- » Tool kit and Tire Mobility Set: 12-volt compressor and tire sealant
- » UN ECE Compliant
- » Electronic immobilizer
- » Advanced driver attention & drowsiness monitor
- » Tire Pressure Monitoring System
- » 3-point seat belts in front with height adjustment and seat belt pretensioners
- » Warning signal and warning light for front and rear seat belts not fastened
- » Emergency call service
- » Single-tone horn
- » Lane keeping system Lane Assist
- » Lane change system 'Side Assist'
- » Rear Traffic Alert
- » Blind Spot Monitor - exterior mirrors
- » First aid kit, warning triangle and safety vest
- » ISOFIX anchors for child seats on outer rear bench seats and on front passenger seat, compatible for i-Size

## Comfort Package

- » Air Care Climatronic 2 zone automatic climate control with enhanced air filter and stationary air conditioning
- » 2 additional USB-C charging sockets on the center console in rear, charging capacity up to 45 W
- » Variable center console, with exchangeable inserts for beverage holder and storage compartments
- » Heated front seats
- » Laminated safety glass windshield, heated, infrared-reflecting windshield, sound-insulating



The above specifications are for information purposes only as our products are continually updated and changes may be made to the specifications at any time. If you require any specific feature, you must consult your local dealer who is regularly updated with any change in specification. Specifications are subject to change without notice.

# ID.4 PRO PLUS

In addition to ID.4 PRO specification

77kWh Battery  
547km Range

## Metallic Paint

- » As Standard\*

## Alloy Wheel Package

- » 19" 'HAMAR' alloy wheels - 8J x 19, Black, diamond-turned surface
- » Wheel locks with extended theft protection

## Exterior Package

- » IQ.LIGHT - LED matrix headlamps with automatic headlight control, poor weather light, entry lighting
- » 3D LED rear combination lamps with dynamic turn signal
- » Illuminated molding between headlamps
- » Rear Tinted Windows
- » Advanced high-beam control Dynamic Light Assist

## Additional Standard Items

- » Easy Open Package
- » Floor Mats



The above specifications are for information purposes only as our products are continually updated and changes may be made to the specifications at any time. If you require any specific feature, you must consult your local dealer who is regularly updated with any change in specification. Specifications are subject to change without notice.



# ID.4 PRO STYLE

In addition to ID.4 PRO PLUS specification

77kWh Battery  
540km Range

## Interior Package Plus 'Sport'

- » Top Sports Seats in Art Velours
- » ergoActive seats in front with power adjustment, memory feature & adjustable thigh support
- » Front head restraints intergrated into the seat
- » Pneumatically-adjustable lumbar support in front with massage feature

## Black Styling Package

- » Black exterior mirror housing
- » Roof trim strip and rear pillar in high-gloss black
- » Nameplate 'ID.4' in Black
- » Black Roof

## Additional Standard Items

- » Panoramic Glassroof

## Alloy Wheel Package

- » 19" 'BERGEN' alloy wheels - 8J x 19, Black



\*Selected Metallic Paints are Standard. Please refer to paint page for details.

The above specifications are for information purposes only as our products are continually updated and changes may be made to the specifications at any time. If you require any specific feature, you must consult your local dealer who is regularly updated with any change in specification. Specifications are subject to change without notice.



# ID.4 GTX

In addition to ID.4 PRO specification

77kWh Battery  
526km Range

## GTX Exterior

- » GTX-specific 20" 'Ystad' alloy wheels
- » Wheel locks with extended theft protection
- » AirStop® tires 235/50 R20 in front, AirStop® tires 255/45 R20 in rear
- » GTX-specific front bumper
- » GTX-specific rear bumper and diffuser in Galvano grey
- » Unique GTX exterior badging
- » GTX-specific light signature
- » Side skirts painted in exterior colour
- » Roof trim and C-pillar in Anthracite

## GTX Interior

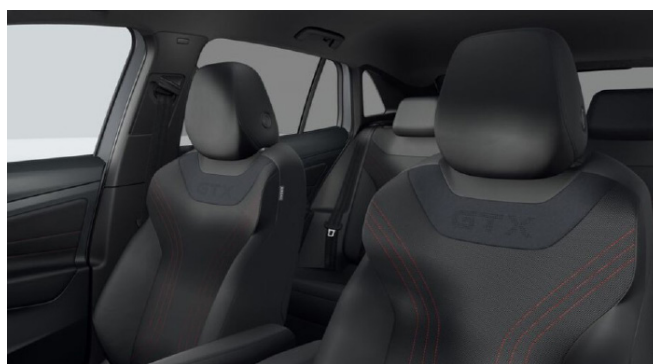
- » GTX-specific leather-wrapped multifunction steering wheel with GTX clasp in red
- » GTX-specific instrument cluster
- » Dashboard in black with red stitching
- » GTX-specific seats with "GTX" perforation and red stitching
- » Door panels in black leatherette with red stitching
- » Door sill protectors with "GTX" inscription in front

## Exterior Design Package

- » IQ.LIGHT - LED matrix headlamps with automatic headlight control, poor weather light, entry lighting
- » 3D LED rear combination lamps with dynamic turn signal
- » Illuminated molding between headlamps
- » Rear Tinted Windows
- » Advanced high-beam control Dynamic Light Assist

## Sport Package

- » Progressive steering
- » Sports suspension
- » Shock absorption in front



The above specifications are for information purposes only as our products are continually updated and changes may be made to the specifications at any time. If you require any specific feature, you must consult your local dealer who is regularly updated with any change in specification. Specifications are subject to change without notice.

# ID.4 GTX PLUS

In addition to ID.4 GTX specification

77kWh Battery  
520km Range

## Interior Package Plus 'GTX'

- » GTX Sports Seats in Art Velours
- » ergoActive seats in front with power adjustment, memory feature & adjustable thigh support
- » Front head restraints intergrated into the seat
- » Pneumatically-adjustable lumbar support in front with massage feature

## Assistance Package Plus

- » Park Assist Pro with Memory Feature
- » Area View Camera
- » Easy Open Package
- » Travel Assist, Lane Assist, Side Assist & Emergency Assist
- » Car2X

## Infotainment Package Plus

- » Augmented reality Head-up Display
- » 'Harman Kardon' 8+1 premium sound system

## Additional Standard Items

- » Floor Mats

## Metallic Paint with Black Roof

- » As Standard\*



\*Selected Metallic Paints are Standard. Please refer to paint page for details.

The above specifications are for information purposes only as our products are continually updated and changes may be made to the specifications at any time. If you require any specific feature, you must consult your local dealer who is regularly updated with any change in specification. Specifications are subject to change without notice.



# Options

## Driver Assistance Systems

			PURE	PURE PLUS	PRO	PRO PLUS	PRO STYLE	GTX	GTX PLUS
PE9	ASSISTANCE PACKAGE PLUS	Additional items to Assistance Package  Area View Camera Easy Open Package* Park Assist Pro Memory Feature for Park Assist Travel Assist, Lane Assist, Side Assist & Emergency Assist Car2X  <i>*Easy Open Package is a standard item in the ID.4 PRO PLUS / STYLE</i>	○	○	○	○	○	○	S

## Audio & Navigation

			PURE	PURE PLUS	PRO	PRO PLUS	PRO STYLE	GTX	GTX PLUS
RD9	INFOTAINMENT PACKAGE PLUS	Additional items to Infotainment Package  Augmented reality head-up display Harman Kardon sound system	○	○	○	○	○	○	S

## Functional

			PURE	PURE PLUS	PRO	PRO PLUS	PRO STYLE	GTX	GTX PLUS
PAZ	COMFORT PACKAGE PLUS	3-Zone Climatronic Luggage Net / Net Partition	○	○	○	○	○	○	○
1M6	TRAILER HITCH, POWER FOLDING		○	○	○	○	○	○	○
PSH	SPORTS PACKAGE PLUS	Adaptive Chassis Control DCC Rear shock absorption	-	-	-	-	-	○	○
WPU	HEAT PUMP		○	○	○	○	○	○	○

For exact options prices for your vehicle, please contact your local dealer or visit [www.volkswagen.ie](http://www.volkswagen.ie)

S Standard   ○ Optional   – Not available

Effective from 1st of November 2025, for production from CW36/2025 onwards. All prices include VAT and VRT. Prices and specifications are subject to change without notice.

# Options

## Styling

			PURE	PURE PLUS	PRO	PRO PLUS	PRO STYLE	GTX	GTX PLUS
WAJ	INTERIOR PACKAGE PLUS	ergoActive seats in front with power adjustment, memory feature & adjustable thigh support Pneumatically-adjustable lumbar support in front with massage feature	○	○	○	○	○	–	–
WAK	INTERIOR PACKAGE PLUS 'SPORT'	Top sports seats in Art Velours ergoActive seats in front with power adjustment, memory feature & adjustable thigh support Pneumatically-adjustable lumbar support in front with massage feature Front head restraints integrated into the seat	○	○	○	○	○	–	–
	BI - COLOUR ROOF STYLING PACKAGE (BLACK ROOF)		○	○	○	○	S	S	S
WAL	INTERIOR STYLE PLUS 'GTX'	GTX sports seats in Art Velours ergoActive seats in front with power adjustment, memory feature & adjustable thigh support Pneumatically-adjustable lumbar support in front with massage feature Front head restraints integrated into the seat	–	–	–	–	–	○	S
PA2	EXTERIOR STYLE PACKAGE	Matrix LED Headlights Illuminated light bar between headlights Advanced High Beam 3D LED taillights with dynamic turn signals Rear Tinted Windows	○	○	○	S	S	S	S
WBT	BLACK STYLING PACKAGE	19" 'Bergen' Alloy Wheels Rear Tinted Windows* Black exterior mirror housing Nameplate 'ID.4' in Black Roof trim strip and rear pillar in high-gloss black Black luggage compartment lid  *Standard on Pure Plus, Pro Plus, Pro Style, GTX and GTX Plus	○	○	○	○	S	○	○
3FG	PANORAMIC GLASSROOF		○	○	○	○	S	–	–
PA5	STYLING PACKAGE PLUS	Panoramic Glassroof	–	–	–	–	–	○	○

For options prices for your vehicle, please contact your local dealer or visit [www.volkswagen.ie](http://www.volkswagen.ie)

S Standard   ○ Optional   – Not available

Effective from 1st of November 2025, for production from CW36/2025 onwards. All prices include VAT and VRT. Prices and specifications are subject to change without notice.



# Options

## Wheels

		PURE	PURE PLUS	PRO	PRO PLUS	PRO STYLE	GTX	GTX PLUS
PJ9	21" 'NARVIK' ALLOY WHEELS IN BLACK WITH AIRSTOP TYRES	–	–	–	–	–	o	o
PJ4	21" 'NARVIK' ALLOY WHEELS WITH AIRSTOP TYRES	–	–	o	o	o	o	o
PJY	20" 'DRAMMEN' ALLOY WHEELS	–	–	o	o	o	–	–
PJ8	19" 'HAMAR' ALLOY WHEELS	–	–	o	S	S	–	–
PJ7	19" 'HAMAR' ALLOY WHEELS	o	o	–	–	–	–	–
PJ1	18" 'FALUN' ALLOY WHEELS	o	S	–	–	–	–	–

## Paint

		PURE	PURE PLUS	PRO	PRO PLUS	PRO STYLE	GTX	GTX PLUS
Solid Paint	Moonstone Grey	S	o	S	o	o	o	S
Metallic Paint	Grenadilla Black Blue Dusk Costa Azul (not available on GTX) Silver Scale Glacier White Grenadilla Black	o	S	o	S	S	o	S
Metallic Paint	Kings Red	o	o	o	o	o	o	o

Optional Black Roof forces option pack:

WM1 BI - COLOUR ROOF STYLING PACKAGE (BLACK ROOF)

For options prices for your vehicle, please contact your local dealer or visit [www.volkswagen.ie](http://www.volkswagen.ie)

S Standard o Optional – Not available

Effective from 1st of November 2025, for production from CW36/2025 onwards. All prices include VAT and VRT. Prices and specifications are subject to change without notice.

# Colours



Moonstone Grey Solid

C2C2

Scale Silver Metallic<sup>1</sup>

1T1T

Blue Dusk Metallic<sup>1</sup>

2P2P

King's Red Metallic<sup>1</sup>

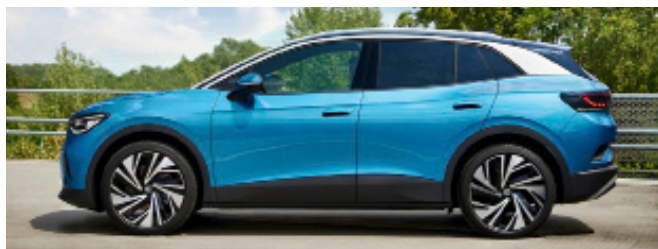
P8P8

Grenadilla Black Metallic<sup>1</sup>

0E0E

Glacier White Metallic<sup>1</sup>

2Y2Y

Costa Azul Metallic<sup>1,2</sup>

3K3K

<sup>1</sup>Optional at extra cost · <sup>2</sup>Not available on GTX models

Note: All paints (with the exception of Grenadilla Black Metallic) can add a black exterior roof with the optional extra Bi-Colour Styling Package. Please note, the print processes do not allow exact reproduction of the paint colours.

Effective from 1st of November 2025, for production from CW36/2025 onwards. All prices include VAT and VRT. Prices and specifications are subject to change without notice.



# Upholstery



**Artvelours Microfleece/Leatherette**  
Soul/Platinum Grey  
Standard from ID.4 PURE / PRO

Electric controls are available via the addition of the Interior Plus Package



**Artvelours Microfleece/Leatherette**  
Soul/Florence Brown  
Standard from ID.4 PURE / PRO

Electric controls are available via the addition of the Interior Plus Package



**Artvelours Microfleece/Leatherette**  
Soul/Platinum Grey  
Standard from ID.4 PRO STYLE  
Optional on ID.4 PURE / PRO



**GTX Cloth/Leatherette**  
Soul/Flash Red  
Standard on ID.4 GTX



**GTX Art Velours/Leatherette**  
Soul/Flash Red  
Standard on ID.4 GTX PLUS  
Optional on ID.4 GTX

Note: Some parts of leather interior trim will contain artificial leather.  
Note: The print processes do not allow exact reproduction of the upholstery & insert colours.

Effective from 1st of November 2025, for production from CW36/2025 onwards. All prices include VAT and VRT. Prices and specifications are subject to change without notice.

# Interior



**Standard from ID.4 PURE / PRO**

Soul/Black/Platinum Grey



**Standard selection from ID.4 PURE / PRO**

Soul/Black/Florence Brown



**Standard on ID.4 GTX**

Soul/Black/Red

Note: Some parts of leather interior trim will contain artificial leather.  
Note: The print processes do not allow exact reproduction of the upholstery & insert colours.



# Colour and Fabric Combinations

	Interior code	Trim seat	Carpet	Door Insert	Steering Wheel	Headliner	Moonstone Grey Solid C2C2	Scale Silver Metallic* 1T1T	Blue Dusk Metallic* 2P2P	King's Red Metallic* P8P8	Glacier White Metallic* 2Y2Y	Costa Azul Metallic* 3K3K	Grenadill Black Metallic* 0E0E
Standard on ID.4 PURE / PRO													
ArtVelours/ Microfleece	SD	Soul/ Platinum Grey	Black	Leatherette finished in Platinum Grey / Florence Brown	Black	Soul	o	o	o	o	o	o	o
ArtVelours/ Microfleece	ZK	Soul/ Platinum Grey	Black	Leatherette finished in Platinum Grey / Soul	Black	Soul	o	o	o	o	o	o	o
	Interior code	Trim seat	Carpet	Door Insert	Steering Wheel	Headliner	Moonstone Grey Solid C2A1	Scale Silver Metallic 1TA1	Blue Dusk Metallic 2PA1	King's Red Metallic* P8A1	Glacier White Metallic 2YA1	Costa Azul Metallic* 3KA1	Grenadill Black Metallic 0E0E
Standard on ID.4 PRO STYLE (includes Black Roof)													
ArtVelours/ Microfleece	SD	Soul/ Platinum Grey	Black	Leatherette finished in Platinum Grey / Florence Brown	Black	Soul	o	o	o	o	o	o	o
ArtVelours/ Microfleece	ZK	Soul/ Platinum Grey	Black	Leatherette finished in Platinum Grey / Soul	Black	Soul	o	o	o	o	o	o	o
	Interior code	Trim seat	Carpet	Door Insert	Steering Wheel	Headliner	Moonstone Grey Solid C2A1	Scale Silver Metallic 1TA1	Blue Dusk	King's Red Metallic* P8A1	Glacier White Metallic 2YA!		Grenadill Black Metallic 0E0E
Standard on ID.4 GTX (includes Black Roof)													
Fabric Cloth/ ArtVelours/ Microfleece	UG	Soul/Red / Black	Black	Leatherette finished in Black / Red / Soul	Black	Soul	o	o	o	o	o		o

o Available – Not available \*Optional at extra cost

# Alloy Wheels



**STANDARD ON ID.4 PURE PLUS**

**Optional on ID.4 PURE**

18" 'Falun' alloy wheels

8J x 18 in front, 8J x 18 in rear



**Optional on ID.4 PURE / PURE PLUS / PRO / PRO PLUS**

20" 'Drammen' alloy wheels

8J x 20 in front, 9J x 20 in rear

Tyres: 235/50 R20 in front

255/45 R20 in rear



**Optional on ID.4 GTX**

21" 'Narvik' in Black alloy wheels

8.5J x 21 in front, 9J x 21 in rear

Tyres: 235/45 R21 in front

255/40 R21 in rear



**STANDARD ON ID.4 PRO PLUS**

**Optional on ID.4 PURE / PURE PLUS / PRO**

19" 'Hamar' alloy wheels

8J x 19 in front, 9J x 19 in rear

Tyres: 235/50 R19 in front

255/45 R19 in rear



**STANDARD ON ID.4 GTX**

20" 'Ystad' alloy wheels

8J x 20 in front, 9J x 20 in rear

Tyres: 235/50 R20 in front

255/45 R20 in rear



**Optional on ID.4 PRO / PRO PLUS & ID.4 GTX**

21" 'Narvik' alloy wheels

8.5J x 21 in front, 9J x 21 in rear

Tyres: 235/45 R21 in front

255/40 R21 in rear

# Technical Data

	ID.4 Pure <sup>1</sup>	ID.4 Pro <sup>1</sup>	ID.4 GTX <sup>1</sup>
Engine	52kWh	77kWh	77kWh
Engine type	Electric	Electric	Electric
Driving range WLTP Combined, km	360-363	540-553	520-527
Max. output, HP/kW**	170	286	340
Max. torque, Nm	310	560	134
Gearbox	Single-speed	Single-speed	Single-speed
<b>Performance</b>			
Top speed, km/h, where the law permits:	160	180	180
Acceleration, secs 0 – 100km/h:	9.0	6.7	5.4
<b>Battery and charging system</b>			
Battery type	Lithium Ion	Lithium Ion	Lithium Ion
Weight of battery, kgs	493	493	493
Gross vehicle weight, kgs	2,490	2,690	2,770
Rated capacity, kWh	52	77	77
Official consumption WLTP <sup>2</sup> , kWh/100km	16.5 - 16.6	15.8 - 16.0	16.6 - 16.8
Number of cells	TBC	288	288
Nominal voltage, V	TBC	408	408
Charging time, AC, 2.3kW 0%-100%, hour <sup>2</sup>	TBC	TBC	TBC
Charging time, AC, 11.0kW 0%-100%,	TBC	8 Hours	TBC
Charging time, basic kW DC 5%-80%,	53 Mins	TBC	TBC
Charging time, maximum kW DC 5%-80%,	36 Mins	TBC	TBC
Combined CO2 emissions, g/km	0	0	0

\*\*Maximum power determined in accordance with UN-GTR.21. The maximum power is available at the highest possible battery state of charge and with an optimal operating temperature range of the high voltage battery.

<sup>1</sup>VRT Bands and rate of Annual Motor Tax are valid as of 1st January 2022 and calculated from the base model WLTP values for model year 2026 cars produced from CW36/2025 onwards. All vehicles with TBC are subject to EU type approval and with that were not available at time of going to print.

<sup>2</sup>These are average charging times that can vary depending on certain conditions, such as temperature.

The specified fuel consumption and emission values are the official figures obtained from tests under standardised EU test conditions in accordance with the Worldwide Harmonized Light Vehicles Test Procedure (WLTP), a more realistic test method for measuring fuel consumption (kWh/100km) and CO<sub>2</sub> emissions and are correct at the time of print. The above values reflect the standard vehicle excluding additional equipment such as optional extras and accessories which may have an effect on the fuel consumption (kWh/100km) and achievable range. WLTP range values for standard vehicles may vary depending on equipment. In practice, the actual range varies depending on driving style, speed, use of convenience/auxiliary equipment, outside temperature, number of passengers/additional load, and topography. To discover exact values please configure your desired vehicle at [volkswagen.ie/build](https://www.volkswagen.ie/build). You can discover more about the WLTP at [volkswagen.ie/wltp](https://www.volkswagen.ie/wltp).

To calculate your estimated driving range please click here <https://www.volkswagen.ie/en/electric-cars/e-mobility-tools.html>

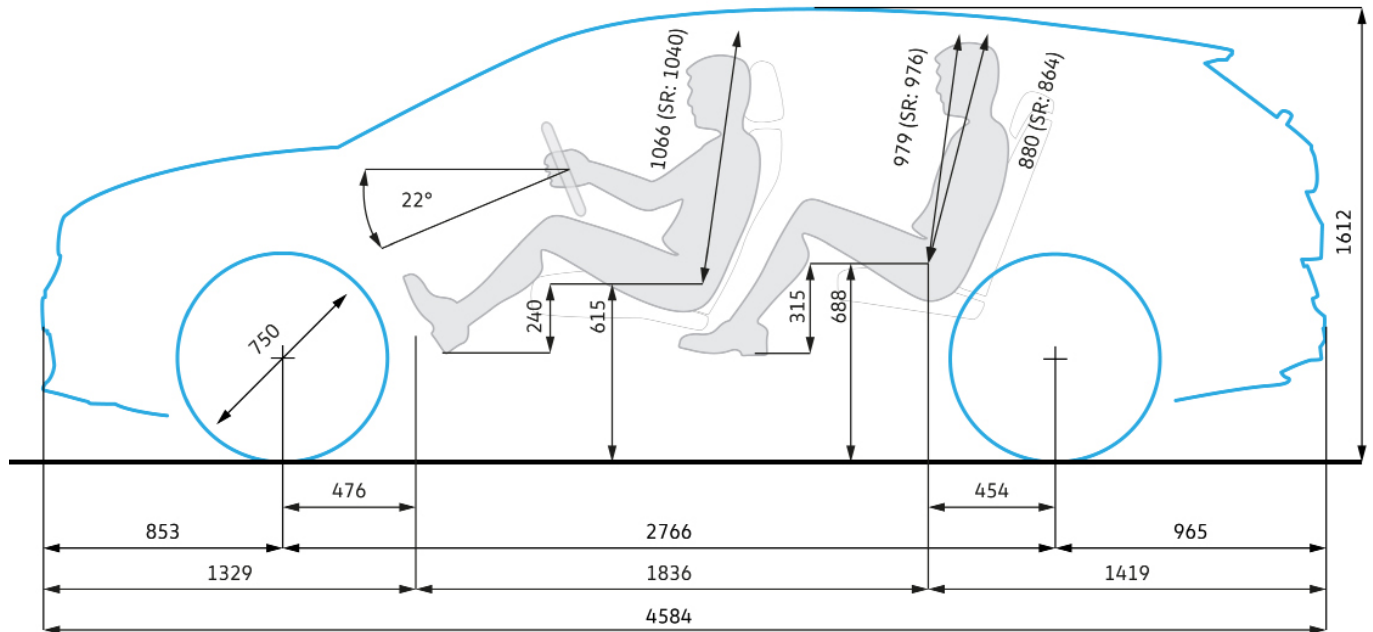
In accordance with (EU) 2020/740 ("Tire Labeling Regulation"), please visit [volkswagen.ie](https://www.volkswagen.ie) configurator for details relating to the tyres applicable to said vehicles

Please note every effort has been made to ensure the contents of this publication (including RRP, CO<sub>2</sub>, fuel consumption and technical information) were accurate and up-to-date at the time of going to print 1st of November 2025.



# The ID.4

## Product Dimensions



Max Roof Load, kgs:  
75

Towing Capacity, kgs:  
1,200 with 77kWh  
1,400 with 77kWh AWD

Width Excluding exterior  
mirrors, mm:  
1,852

Width Including exterior  
mirrors, mm:  
2,108

Boot Capacity, Itrs:  
543 (1,575 with rear  
seats folded)

Ground Clearance, mm:  
210

# Grants & We Charge

## Grants

» Please [click here](#) for more information on government grants.

## We Charging

» Please [click here](#) for more information on We Charging.

